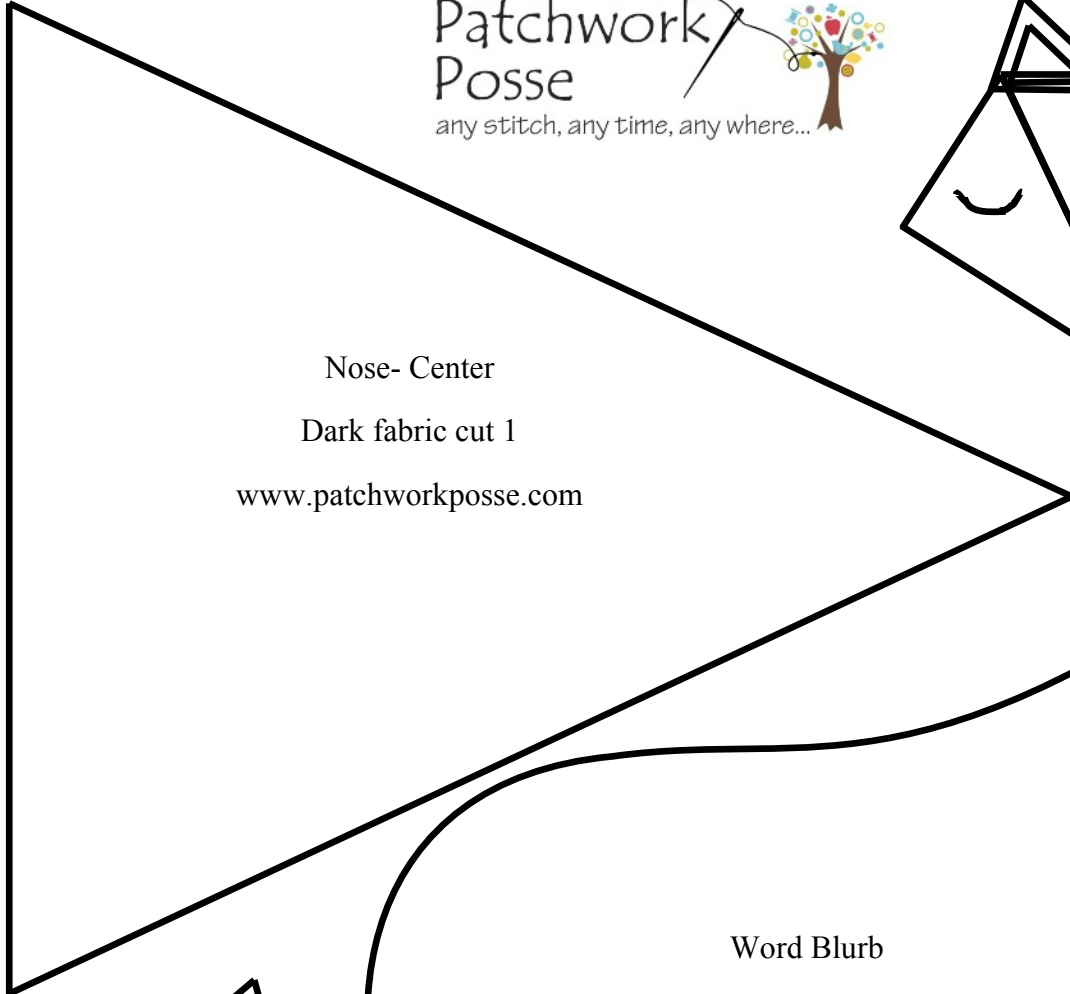
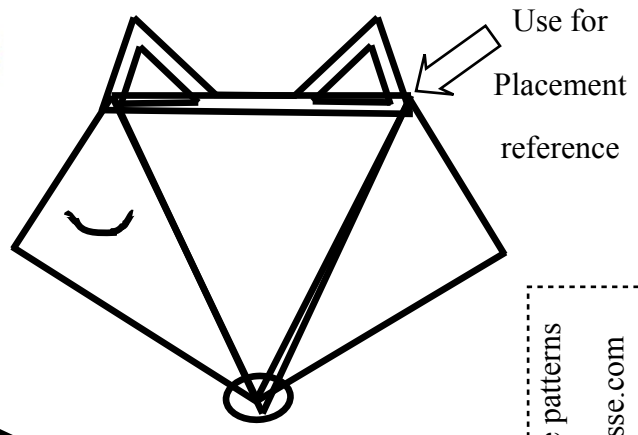


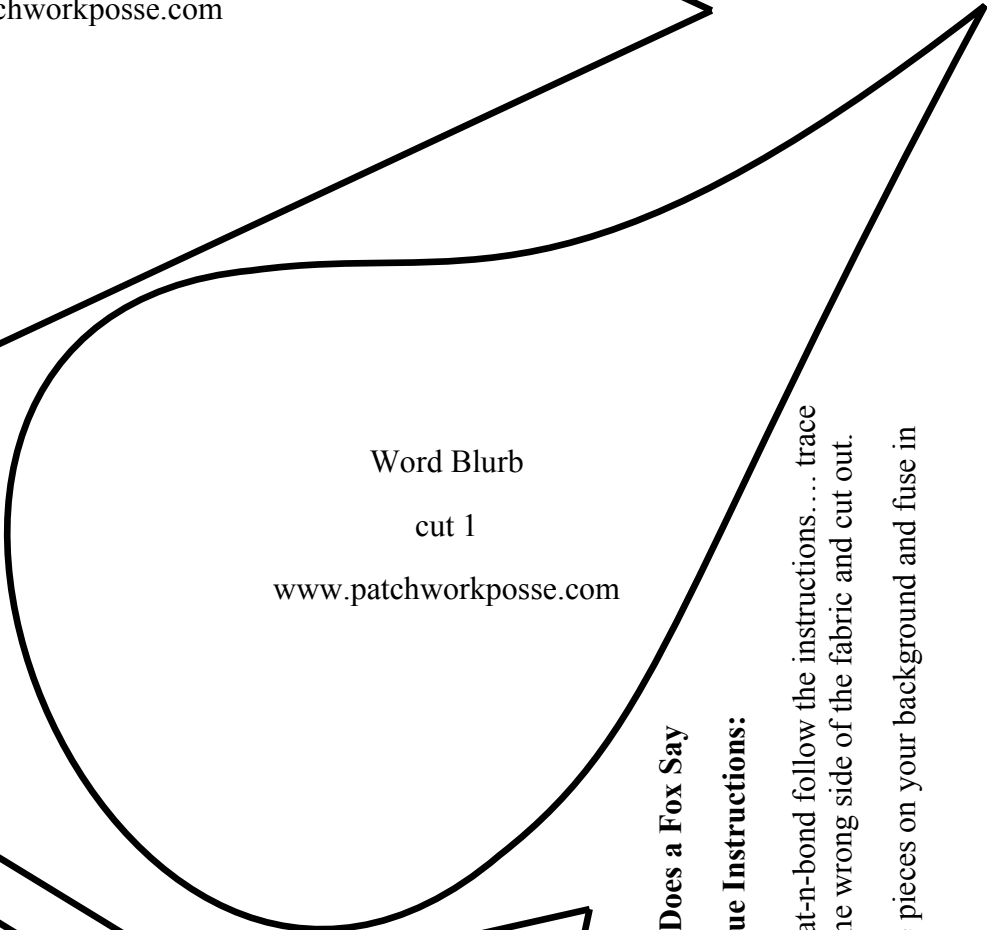
What does a Fox say? Applique Template



Nose- Center

Dark fabric cut 1

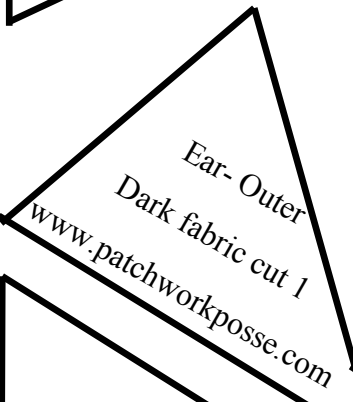
www.patchworkposse.com



Word Blurb

cut 1

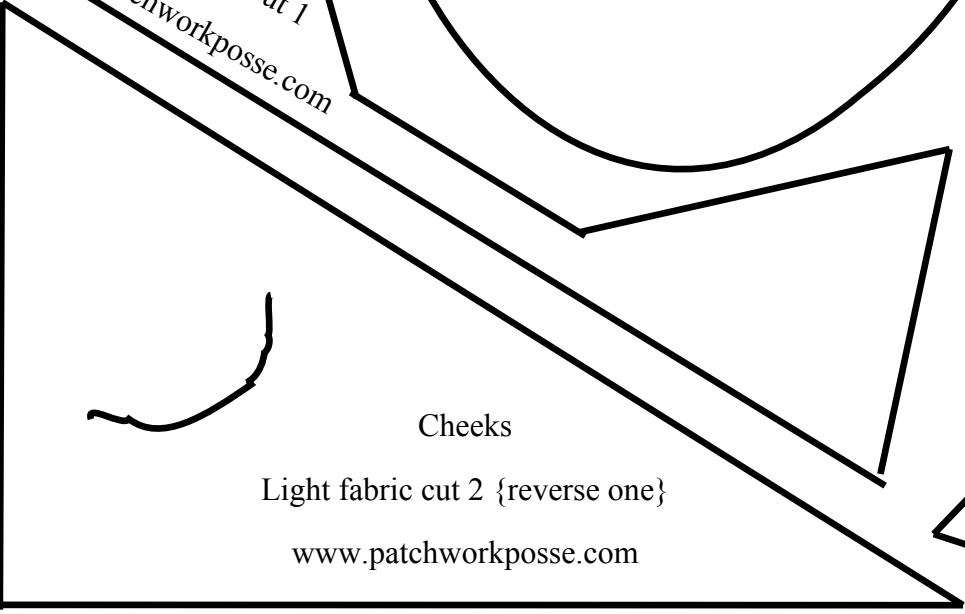
www.patchworkposse.com



Ear- Outer

Dark fabric cut 1

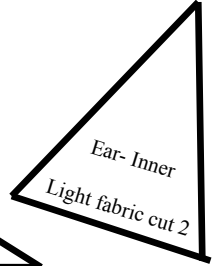
www.patchworkposse.com



Cheeks

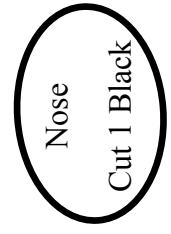
Light fabric cut 2 {reverse one}

www.patchworkposse.com



Ear- Inner

Light fabric cut 2



Nose

Cut 1 Black

What Does a Fox Say Applique Instructions:

- 1) Using heat-n-bond follow the instructions.... trace and fuse to the wrong side of the fabric and cut out.
- 2) Layer the pieces on your background and fuse in place
- 3) Using Raw Edge applique method, stitch around the shapes twice. I used black thread-
- 4) Draw eyes with pencil and stitch with machine

For more tutorials and free patterns
Visit: www.patchworkposse.com