

Shark Pencil Case

Finished size: 11" X 8"

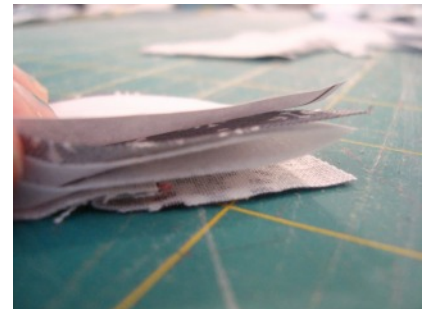
Materials List:

- Fat quarter- Grey- or fabric scraps
- 20" X 25" lite interfacing
- Fat quarter- red fabric- lining
- white zipper 7"
- pinking shears
- shark pouch templates- cut out pieces



Instructions for Shark Pencil Case~

- 1) Sew together your scraps until they are large enough to be cut out with the template
- 2) Pin template in place and cut out 2 body pieces- out of patchwork and out of interfacing
- 3) Laying the patchwork body piece on top of the interfacing, quilt together. (I quilted straight lines)- set aside these two pieces
- 4) Layer these in order- back fabric, interfacing, interfacing, top fabric, template for fin.
- 5) Pin together the layers and cut out
- 6) Sew around the sides (you can leave the bottom un-sewn)
- 7) Cut the sides with your pinking shears- don't cut your seam!
- 8) Repeat so you have 2 side fins and one large fin for the top of the shark
- 9) Take the body piece you are using for the top of your shark and fold in half- iron to crease
- 10) Lay the large fin in the center of the shark and with the raw edge or bottom of the fin touching the center crease



Shark Pencil Case

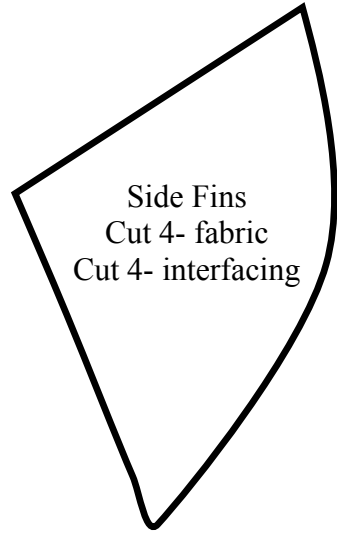
- 11) Fold the shark body in half again and sew 1/4"
- 12) Repeat this with the bottom of the shark....with no fin. Just fold in half and sew 1/4"
- 13) Pin and stay stitch the side fins of the shark
- 14) Lay right sides together and sew the sides and bottom fin of the shark- catching the side fins. Stop and start your seams at the dots marked on the template
- 15) Snip the curves, corners, and valleys
- 16) Turn right sides out
- 17) Cut out 2 pieces for the shark lining— notice that I didn't cut the tail— you don't really need it. Just end the pouch with a square bottom



- 18) Lay right sides together of the lining and sew down the sides and bottom— leave a 3" opening on one side for turning later and stop and start at the marks
- 19) Pin the zipper or stay stitch the zipper in place at the mouth
- 20) Place the pouch inside the lining and pin along the mouth with the zipper in between— this area is small, it's a bit tricky
- 21) Sew around the mouth securing the zipper
- 22) Pull the bag through the opening and close the opening
- 23) Stuff the lining inside the bag

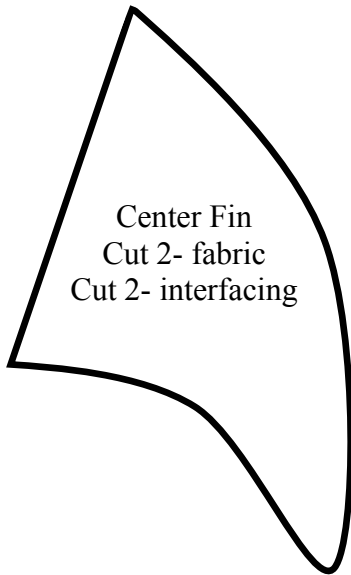


For more pouches, quilts and other free patterns visit: www.patchworkposse.com



Side Fins
Cut 4- fabric
Cut 4- interfacing

Shark Case Template
Cut 2- fabric
Cut 2- interfacing



Center Fin
Cut 2- fabric
Cut 2- interfacing

www.patchworkposse.com